

REVISIONS:

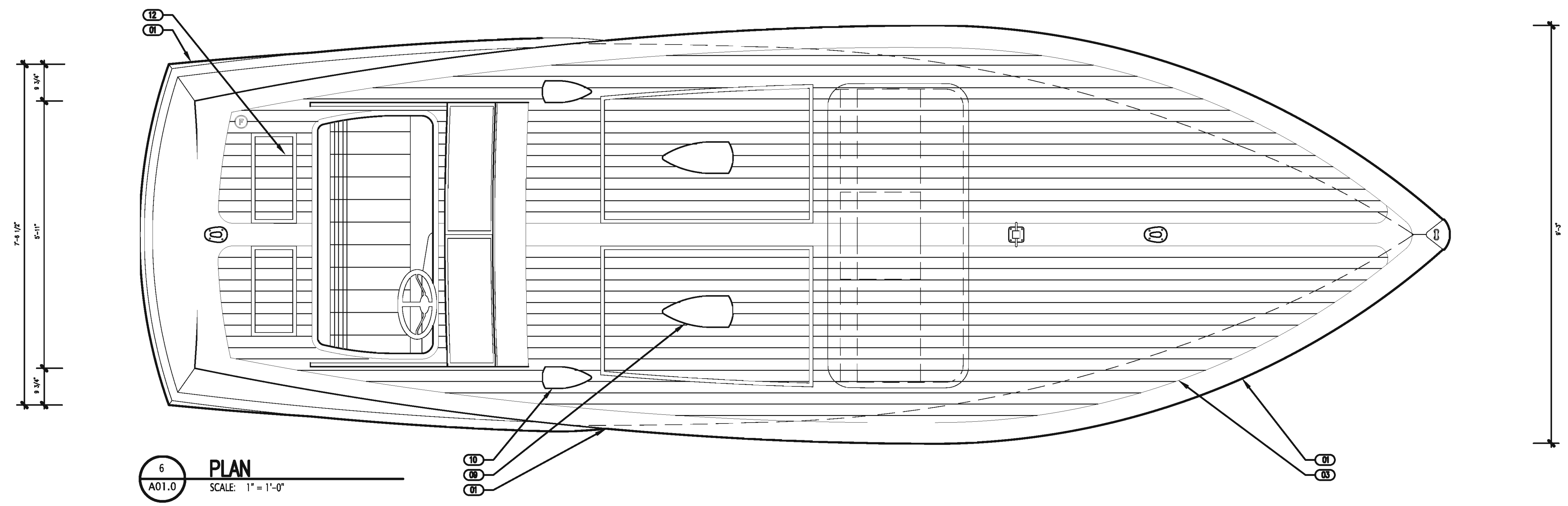
- KEY NOTES:
- 01 3/4" POL. S.S. RUBRAIL
 - 02 1/2" MAHOGANY PLANKS
 - 03 MAHOG.-STAINED, VARNISHED
 - 04 FORWARD FOLDING SEAT
 - 05 PAINTED BOOT STRIPE
 - 06 BOTTOM PAINT
 - 07 STORAGE LOCKER
 - 08 ENGINE HATCH
 - 09 AIR INTAKE
 - 10 AIR EXHAUST
 - 11 ENGINE EXHAUST
 - 12 AFT STORAGE HATCH
 - 13 TOPSIDES-STAINED AND VARNISHED OR PAINTED
 - 14 CAST BRONZE CHROME PLATED ROPE LOOP
 - 15 ENGINE COOLANT PICK-UP
 - 16 FORWARD STORAGE
 - 17 ENGINE ROOM-PAINTED

CONSULTANTS:

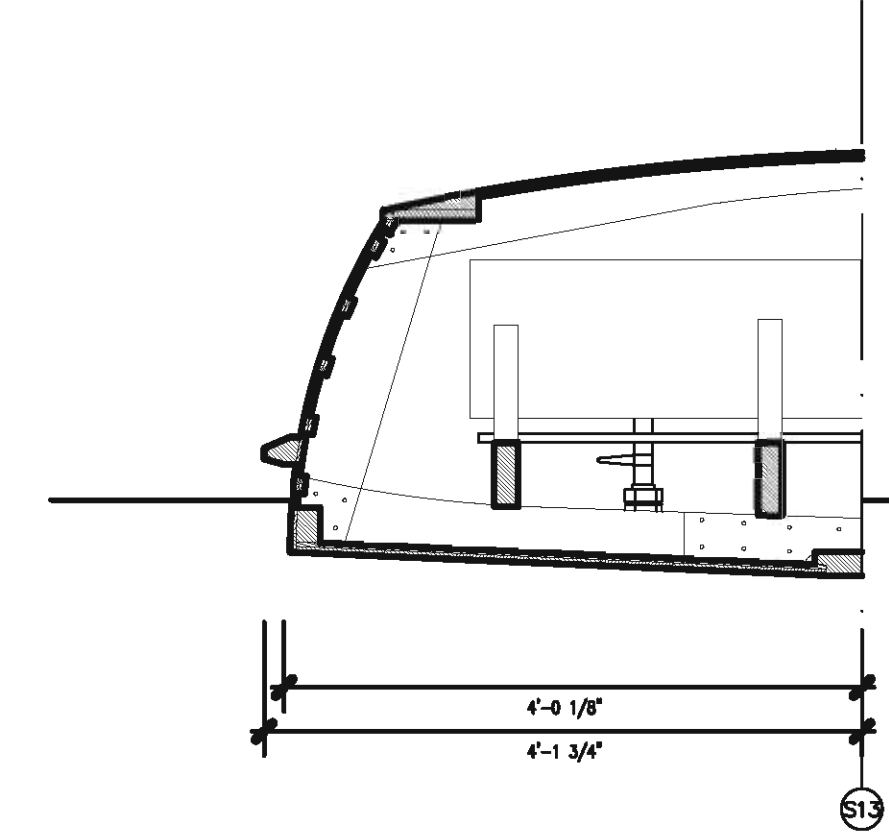
SHEET CONTENTS:
290 GR Gentleman's Racer
 Twin Screw
 prototype 1
 DATE: 09.15.12



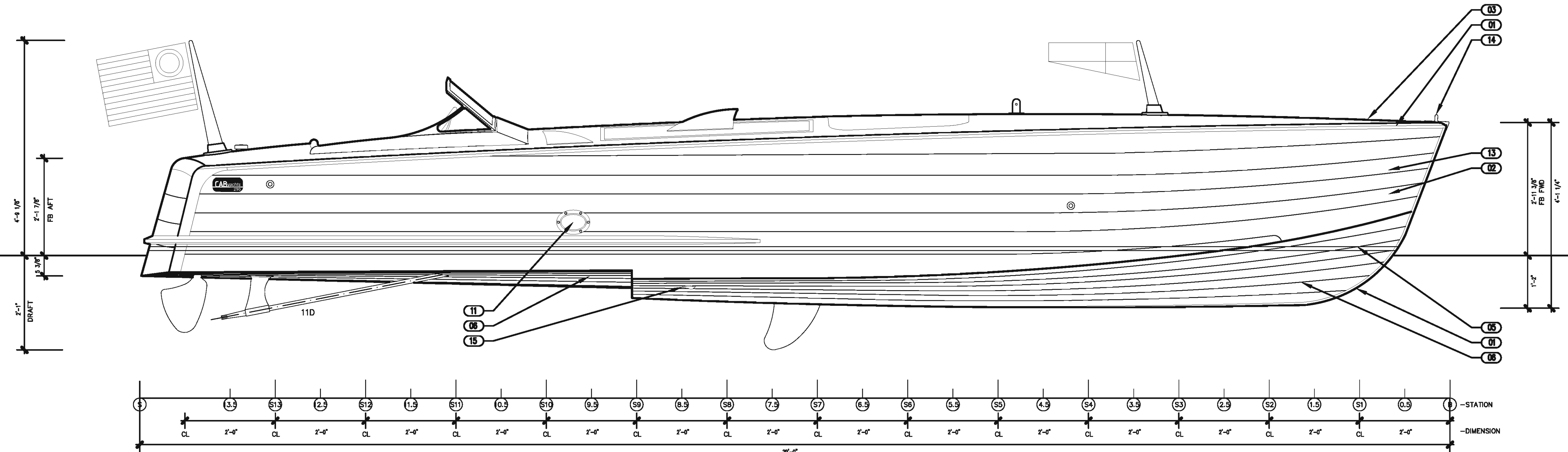
Sheet:
01.00



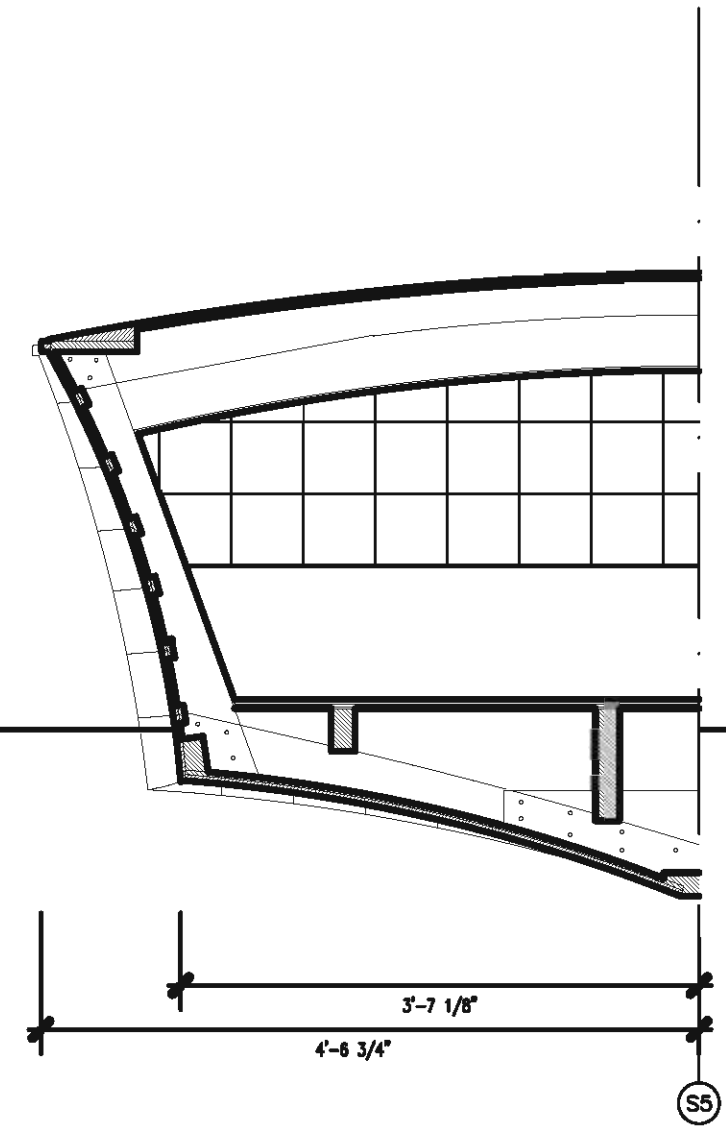
6 PLAN
 A01.0 SCALE: 1" = 1'-0"



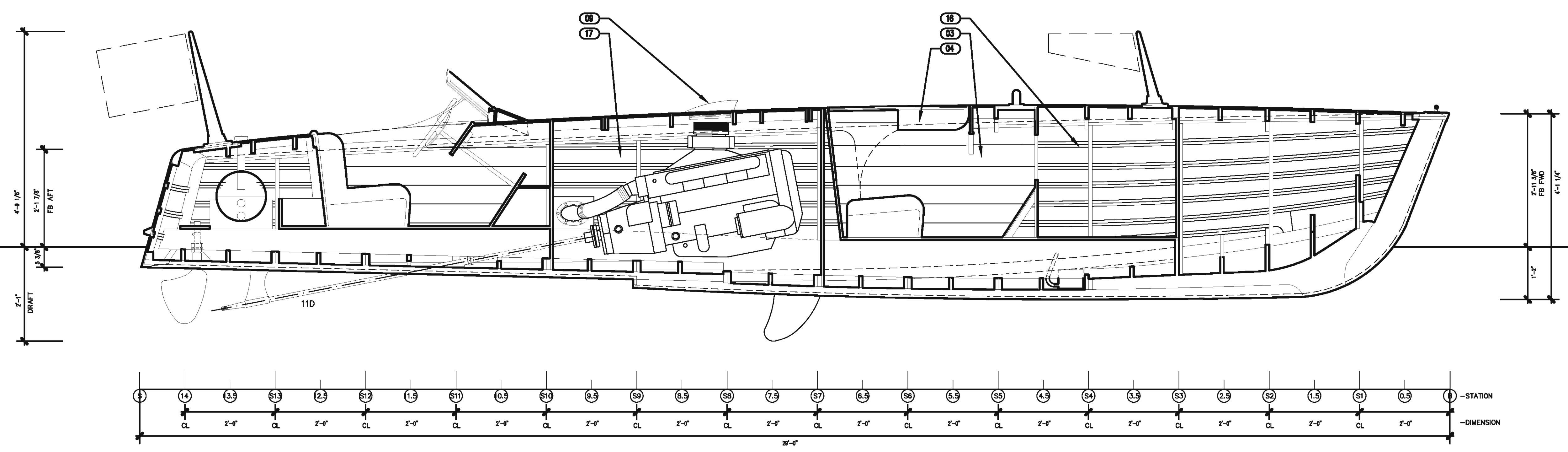
3 SECTION @ STATION 13
 A01.0 SCALE: 1" = 1'-0"



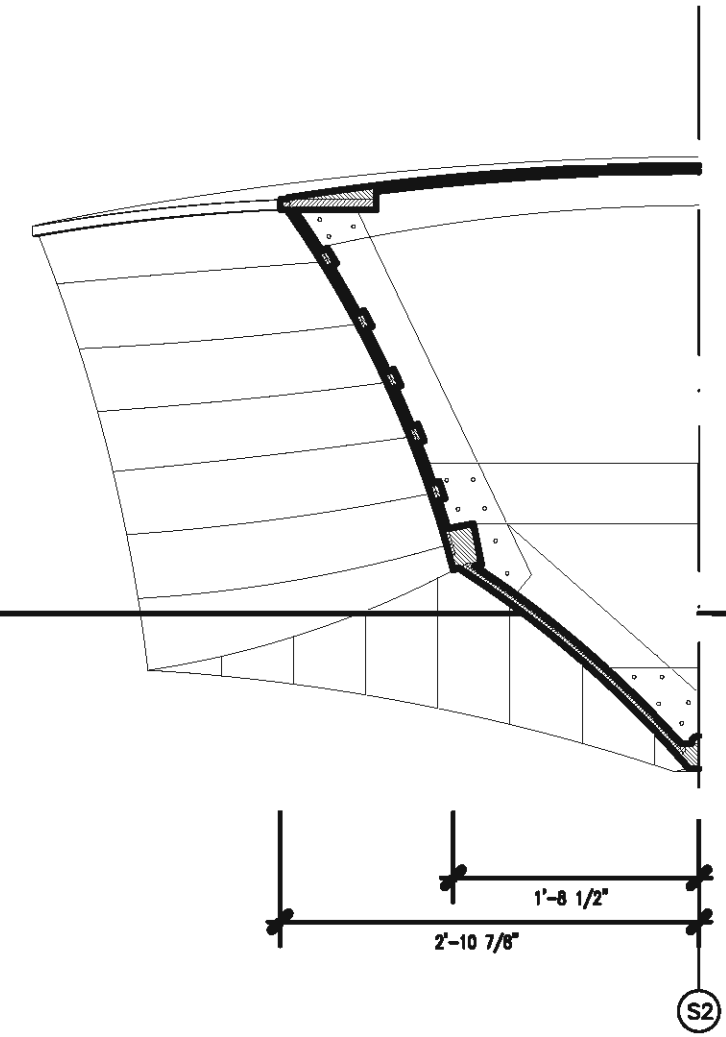
5 ELEVATION: STARBOARD
 A01.0 SCALE: 1" = 1'-0"



2 SECTION @ STATION 5
 A01.0 SCALE: 1" = 1'-0"



4 SECTION: STARBOARD
 A01.0 SCALE: 1" = 1'-0"



1 SECTION @ STATION 2
 A01.0 SCALE: 1" = 1'-0"